

Wireless LAN Antennas



P/N: WAD002-000178B-S13

Frequency: 2.4~2.5GHz/4.9~5.85GHz (Dual Band)
Gain (Max.): 2dBi/2.5dBi
Connector: RP-SMA Plug



P/N: WAD002-000178W-S13

Frequency: 2.4~2.5GHz/4.9~5.85GHz (Dual Band)
Gain (Max.): 2dBi/2.5dBi
Connector: RP-SMA Plug



P/N: WAD003-000178B-S14

Frequency: 2.4~2.5GHz/4.9~5.85GHz (Dual Band)
Gain (Max.): 1.56dBi/4.43dBi
Connector: RP-SMA Plug



P/N: WAD007-000137B-S15

Frequency: 2.4~2.5GHz/5.15~5.875GHz (Dual Band)
Gain (Max.): 3dBi/5dBi
Connector: RP-SMA Plug



P/N: WAD007-000137G-S15

Frequency: 2.4~2.5GHz/5.15~5.875GHz (Dual Band)
Gain (Max.): 3dBi/5dBi
Connector: RP-SMA Plug



P/N: WAD008-050137B-I02

Frequency: 2.4~2.5GHz/4.9~5.85GHz (Dual Band)
Gain (Max.): 2dBi
Connector: I-PEX



P/N: WAD009-060113G-I05

Frequency: 2.4~2.5GHz/4.9~5.85GHz (Dual Band)
Gain (Max.): 2dBi
Connector: I-PEX



P/N: WAD010-000137B-S15

Frequency: 2.4~2.5GHz/5.15~5.875GHz (Dual Band)
Gain (Max.): 3dBi/5dBi
Connector: RP-SMA Plug



P/N: WAD030-000137B-S15

Frequency: 2.4~2.5GHz (Single Band)
Gain (Max.): 5dBi
Connector: N Plug

Wireless LAN Antennas

With Magent Mount



P/N: WAMS001-3M0174B-S05

Frequency: 2.4~2.5GHz (Single Band)
Gain (Max.): 5dB
Connector: SMA Plug

With Magent Mount



P/N: WAMS001-3M0174B-S15

Frequency: 2.4~2.5GHz (Single Band)
Gain (Max.): 5dBi
Connector: RP-SMA Plug

With Magent Mount



P/N: WAMS001-4M0316B-S15

Frequency: 2.4~2.5GHz (Single Band)
Gain (Max.): 5dBi
Connector: RP-SMA Plug

With Magent Mount



P/N: WAMS002-1M0316B-S14

Frequency: 2.4~2.5GHz (Single Band)
Gain (Max.): 4.3dBi
Connector: RP-SMA Plug

With Magent Mount



P/N: WAMS004-4M0316B-S15

Frequency: 2.4GHz (Single Band)
Gain (Max.): 5dBi
Connector: RP-SMA Plug



P/N: WAS001-000178B-T15

Frequency: 2.4~2.5GHz (Single Band)
Gain (Max.): 5dBi
Connector: RP-TNC Plug



P/N: WAS001-000316B-S05

Frequency: 2.4~2.5GHz (Single Band)
Gain (Max.): 5dBi
Connector: SMA Plug



P/N: WAS001-000137B-S06

Frequency: 2.4~2.5GHz (Single Band)
Gain (Max.): 5.5dBi
Connector: SMA Plug



P/N: WAS001-000316B-S15

Frequency: 2.4~2.5GHz (Single Band)
Gain (Max.): 5dBi
Connector: RP-SMA Plug

Wireless LAN Antennas



P/N: WAS001-000316B-S16

Frequency: 2.4~2.5GHz (Single Band)
Gain (Max.): 5.5dBi
Connector: RP-SMA Plug



P/N: WAS001-000316B-T16

Frequency: 2.4~2.5GHz (Single Band)
Gain (Max.): 5.5dB
Connector: RP-TNC Plug



P/N: WAS001a-000316B-S15

Frequency: 2.4~2.5GHz (Single Band)
Gain (Max.): 5dBi
Connector: RP-SMA Plug



P/N: WAS002-000178B-S02

Frequency: 2.4~2.5GHz (Single Band)
Gain (Max.): 1.5dBi
Connector: SMA Plug



P/N: WAS002-000178B-S12

Frequency: 2.4GHz (Single Band)
Gain (Max.): 1.5dBi
Connector: RP-SMA Plug



P/N: WAS002-000178W-S12

Frequency: 2.4~2.5GHz (Single Band)
Gain (Max.): 1.5dBi
Connector: RP-SMA Plug



P/N: WAS003-000178B-S04

Frequency: 2.4~2.5GHz (Single Band)
Gain (Max.): >3dBi
Connector: SMA Plug



P/N: WAS003-000178B-S13

Frequency: 2.4~2.5GHz (Single Band)
Gain (Max.): 3dBi
Connector: RP-SMA Plug



P/N: WAS004-000137B-S12

Frequency: 2.4~2.5GHz (Single Band)
Gain (Max.): 1.5dBi
Connector: RP-SMA Plug

Wireless LAN Antennas



P/N: WAS005-000137B-S12

Frequency: 2.4~2.5GHz (Single Band)
Gain (Max.): 5.5dBi
Connector: RP-SMA Plug



P/N: WAS005-000137W-S12

Frequency: 2.4~2.5GHz (Single Band)
Gain (Max.): 5.5dB
Connector: RP-TNC Plug



P/N: WAS006-000137W-S12

Frequency: 2.4~2.5GHz (Single Band)
Gain (Max.): 1.5dBi
Connector: RP-SMA Plug



P/N: WAS008-200137B-I02

Frequency: 2.4~2.5GHz (Single Band)
Gain (Max.): 2dBi
Connector: I-PEX Plug



P/N: WAS010-155113G-I02

Frequency: 2.4GHz (Single Band)
Gain (Max.): 1.5dBi
Connector: I-PEX Plug



P/N: WAS013-000178B-S19

Frequency: 2.4~2.5GHz (Single Band)
Gain(Max.): 9dBi
Connector: RP-SMA Plug



P/N: WAS014-000178B-T12

Frequency: 2.4~2.5GHz (Single Band)
Gain (Max.): 2dBi
Connector: RP-TNC Plug

GSM Antennas



P/N: ANT001-0918178B-S12

Frequency: 850~1900MHz (Tri Band)
Gain (Max.): <2dBi@ 850~900MHz;
<2.2dBi@1800~1900MHz
Connector: RP-SMA Plug



P/N: ANT003-09137B-S12

Frequency: 900~950MHz (Single Band)
Gain (Max.): 2dBi
Connector: RP-SMA Plug



P/N: ANT004-09178B-S12

Frequency: 902~928MHz (Single Band)
Gain (Max.): 2dBi
Connector: RP-SMA Plug



P/N: ANT005-09178B-S12

Frequency: 902~928MHz (Single Band)
Gain (Max.): 2dBi
Connector: RP-SMA Plug



P/N: ANT011-0821178B-S02

Frequency: 800/900/1800/1900/2100MHz (5 Band)
Gain (Max.): 2.0dBi@894MHz
1.0dBi@1850MHz
Connector: SMA Plug



P/N: ANT012-0821178B-T02

Frequency: 800/900/1800/1900/2100MHz (5 Band)
Gain (Max.): 2.0dBi@900MHz
1.0dBi@1850MHz
Connector: TNC Plug



P/N: ANT013-0821178B-S02

Frequency: 800/900/1800/1900/2100MHz (5 Band)
Gain (Max.): 0.3dBi@824MHz/ 1.7dBi@1710MHz/
2.0dBi@2170MHz
Connector: SMA Plug



P/N: ANT013-0821178B-S12

Frequency: 800/900/1800/1900/2100MHz (5 Band)
Gain (Max.): 0.3dBi@824MHz/ 1.7dBi@1710MHz/
2.0dBi@2170MHz
Connector: RP-SMA Plug



P/N: ANT018-09137B-B04

Frequency: 850~950MHz (Single Band)
Gain (Max.): 2.0dBi@850MHz/ 2.2dBi@900MHz/
4.0dBi@950MHz
Connector: BNC Plug

GSM Antennas



P/N: GSM005-0819-SMAMF

Frequency: 824~960MHz/1710~1990GHz

Gain (Max.): -2dBi

Connector: SMA Plug R/A

Outdoor Antennas



P/N: MOA001-2425W-N04

Frequency: 2.4~2.5GHz (Single Band)
Gain (Max.): 4dBi
Connector: N Plug
Total Length: 330mm



P/N: MOA002-2425W-N06

Frequency: 2.4~2.5GHz (Single Band)
Gain (Max.): 6dBi
Connector: N Plug
Total Length: 395mm



P/N: MOA003-2425W-N08

Frequency: 2.4GHz (Single Band)
Gain (Max.): 8dBi
Connector: N Plug
Total Length: 520mm



P/N: MOA004-2425W-N010

Frequency: 2.4~2.5GHz (Single Band)
Gain(Max.): 10dBi
Connector: N Plug
Total Length: 770mm



P/N: OA001-2425W-N26

Frequency: 2.4~2.5GHz (Single Band)
Gain (Max.): 6dBi
Connector: N Jack
Total Length: 460mm



P/N: OA002-2425W-N28

Frequency: 2.4~2.5GHz (Single Band)
Gain (Max.): 8dBi
Connector: N Jack
Total Length: 560mm



P/N: OA003-2425W-N210

Frequency: 2.4~2.5GHz (Single Band)
Gain (Max.): 10dBi
Connector: N Jack
Total Length: 900mm



P/N: OA004-2425W-N212

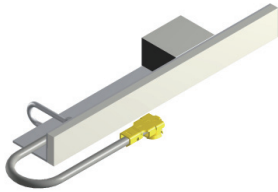
Frequency: 2.4~2.5GHz (Single Band)
Gain (Max.): 12dBi
Connector: N Jack
Total Length: 1050mm



P/N: OA005-2425W-N215

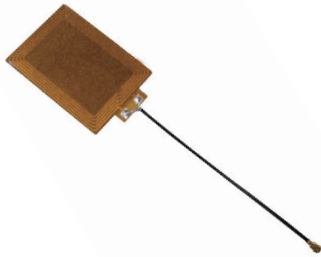
Frequency: 2.4~2.5GHz (Single Band)
Gain (Max.): 15dBi
Connector: N Jack
Total Length: 1050mm

Embedded Antennas



P/N: EA001-240000-XXXX113G-I

Frequency: 2.4~2.5GHz (Single Band)
Gain (Max.): 1.86dBi
Connector: I-PEX Plug



P/N: EA015A-NFC-XXX-113B-I

Frequency: 13.56MHz
Connector: I-PEX Plug